

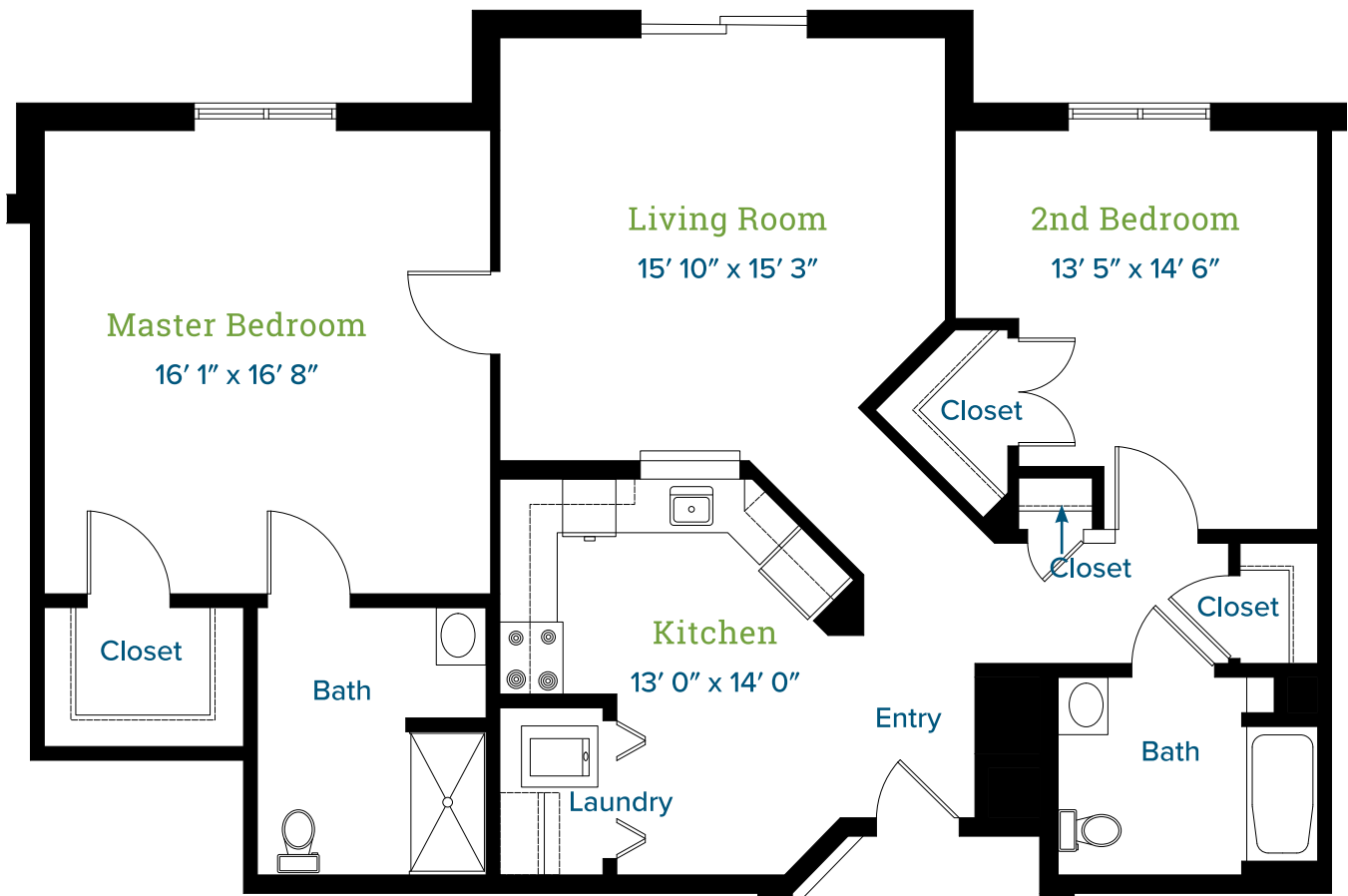


**Friends  
Homes**

ESTABLISHED 1958

**HOBBS HALL - GUILFORD**

2 - Bedroom Apartment / 1235 SQ. FT.



*\*Slight variations in floor plans may exist. Measurements are approximate.*

For more information, contact us at 336.292.8187 or visit [friendshomes.org](http://friendshomes.org).